

EXs 255 Kelfar Omega Greek Bouzouki

Voice Name List / Guide

KORG KRONOS/NAUTILUS
SOUND LIBRARIES

KELFAR
Omega Greek Bouzouki

EXs 255

the Best Kept Secret
KELFAR
TECHNOLOGIES

Kelfar Technologies
Karim El-Far
7486 Boris Court
Rohnert Park, CA 94928
USA
Phone: (707) 664-9892
Email: info@kelfar.net

Contents

EXs 255 Kelfar Omega Greek Bouzouki.....	2
Message from Karim El-Far and the Kelfar Technologies Team.....	5
User Guide to the EXs 255 Kelfar Omega Greek Bouzouki	6
Important Note	6
Before using the EXs 255 Kelfar Omega Greek Bouzouki	7
Common Realtime Controls: Knobs, Switches, Joystick, Vector Joystick, and Ribbon:.....	9
ASSIGNABLE AMS (Alternate Modulation Source).....	10
Poly Legato	10
Expressive Bouzouki Playing Through Four Performance Algorithms	10
ASSIGNABLE AMS (Combinations).....	11
Korg Kronon Pads.....	12
Voice Name List	13
PROGRAMS U-F/Nautilus-f.....	13
COMBINATIONS I-G/Nautilus-G	14
Wave Sequences U-DD/Nautilus-N	15
MultiSamples (Stereo)	16
Multisamples (Mono).....	17

EXs 255 Kelfar Omega Greek Bouzouki

Contents: Approximately 1.7GB of PCM samples (Virtual Memory 229MB), 2529 samples, 92 Multisamples Stereo, 184 Multisamples Mono, 32 Programs [U-F/f], 32 Combis [I-G/G], and 24 WaveSequences [U-DD (N)]

Elevate Your Performances with the EXs 255 Kelfar Omega Greek Bouzouki

Crafted for Korg Kronos & Nautilus | Inspired by Greek Musical Heritage

Whether you're a seasoned performer, a composer, or a passionate explorer of world instruments, the **EXs 255 Kelfar Omega Greek Bouzouki** from **Kelfar Technologies** brings the iconic sound of the bouzouki to your **Korg Kronos** or **Korg Nautilus** with unmatched realism and depth.

Experience the expressive power of the **Greek Tetrachord Bouzouki**, captured with meticulous attention to detail. This library features dynamic layers (**p**, **mp**, and **f**) and essential articulations including **Glissando (Up&Down)**, **Tremolo**, **Tremolo Triplet**, **Staccato**, **Mute**, and **individual Up and Down strokes for each of the four string courses**—all designed to deliver an authentic and inspiring playing experience.

Two Distinct Versions – One Iconic Instrument

- **Acoustic Tetrachord (Four-course):** Tuned C3-C4 / F3-F3 / A3-A3 / D4-D4, this version delivers the natural resonance and brightness of the traditional bouzouki. Perfect for Greek folk, laïka, and acoustic fusion styles.
- **Electric Tetrachord (Four-course):** Tuned C3-C4 / F3-F3 / A3-A3 / D4-D4, this version is recorded through high-quality pickups and amp modeling. It offers both clean and overdriven signal paths, making it ideal for live performance setups and contemporary stage arrangements.
-

Engineered for Authenticity and Performance

Using a custom **Decca Tree-inspired microphone setup** developed by **Sam Skaf**, the EXs 255 captures the full stereo depth and tonal richness of the bouzouki. Combined with deep sampling and detailed editing, this results in a four-dimensional sound experience that brings the instrument to life—on stage or in the studio.

Optimized for Korg Kronos & Nautilus

Coinciding with the debut of Korg's flagship Kronos 3—Return of the King—the EXs255 library brings **HD-1** engine optimization and flawless compatibility to both Kronos and Nautilus. Designed for stage, studio, and screen, it delivers powerful expression, crisp detail, and world-class authenticity.

Realistic Buzuq Articulations and AMS (Alternate Modulation Source, Real-time Controls):

The EXs 255 has the following articulations:

- **Upstrokes & Downstrokes**
- **Glides**
- **Tremolo**
- **Tremolo (Triplet)**
- **Glissando Up**
- **Glissando Down**
- **Glissando Octave Up**
- **Glissando Octave Down**
- **Staccato**
- **Mute**
- **Key off / Note Release**

All the **AMS** assignments and Real-Time Controls have been standardized. You have dynamic control over the sound using SW1, SW2, After Touch, Velocity, Joystick, and Ribbon. It is highly recommended that you use the **EXs 255 Guide** to become familiar with the **Kelfar Omega Greek Bouzouki**.

Key Zones, Velocity Layers & Intelligent Mapping

Due to the **complexity and challenge of mapping four independent string courses** of the Greek bouzouki to a linear keyboard layout, the EXs 255 has been carefully programmed to provide a natural and intuitive playing experience on both **Korg Kronos** and **Korg Nautilus**.

To address this, a specialized **key zoning system** has been implemented to reflect the physical layout and playing style of the bouzouki. This approach allows players to intuitively access the instrument's full tonal and expressive range while maintaining the feel of traditional bouzouki performance.

In addition, **velocity zones** have been meticulously designed to capture the dynamic nuances of the instrument. Each keystroke—whether soft or forceful—triggers a corresponding tonal response, enabling expressive and lifelike performances.

To further enhance playability and customization, the EXs 255 offers **four unique performance algorithms**. These algorithms not only adjust articulation handling and velocity response, but also allow you to **adapt the instrument to different musical scales and tunings**, making it ideal for traditional Greek modes, microtonal variations, or personalized setups.

This intelligent mapping system ensures that the bouzouki's unique character and playability are preserved, offering a **versatile and deeply expressive experience** for keyboardists, composers, and world music performers alike.

Wave Sequences

The **EXs 255 Kelfar Omega Greek Bouzouki** is programmed with round-robins to add more realism to your performance. The Buzuq will no longer sound static or mechanical. Now, it sounds just like a real Buzuq. Each new note sounds with fresh dynamics.

Poly Legato for Expressive Bouzouki Performance

The **EXs 255 Kelfar Omega Greek Bouzouki** features a carefully programmed **poly legato** system, designed to enhance the realism and fluidity of your playing. The voicing team at **Kelfar Technologies** dedicated significant time and precision to fine-tuning each note offset and transition, ensuring that legato passages sound smooth, natural, and true to the expressive style of the bouzouki.

This attention to detail allows for seamless note-to-note transitions, especially when performing melodic lines or ornaments that are characteristic of traditional bouzouki playing. Whether you're gliding between notes or executing fast melodic runs, the poly legato engine responds musically—bringing your performance to life with authenticity and nuance.

Dynamic Buzuq with Velocity switching

Many of the combis are programmed to respond to velocity switching dynamics. The **EXs 255** does respond to Dynamics' Note Velocity: ppp, pp, p, mp, mf, f, ff, and fff.

Effects

Do you need to add specific effects to carry off a solo or flourish? Knobs 7/N-5 and 8/N-6 control the effects in real time. This feature makes it easy to get the right amount of Reverb or Delays whether you're performing live or playing in the studio.

The **EXs 255 Kelfar Omega Greek Bouzouki** was recorded by Issa Jarayseh of Eleen Studio, using his expertise and top-tier audio equipment to achieve a sonically rich and authentic sound. **EXs 255 Kelfar Omega Greek Bouzouki** sound library was mastered by Sam Skaf of Sam Skaf Mastering Studios in New York. His proficiency in audio engineering and musical performance, along with state-of-the-art equipment, ensured true-to-life representations of these highly sought-after instruments. The Kelfar Omega Greek Bouzouki was engineered and programmed by Karim El-Far of Kelfar Technologies.

Bring the soul of the bouzouki to your Korg.

EXs 255 Kelfar Omega Greek Bouzouki – Tradition meets technology.

Message from Karim El-Far and the Kelfar Technologies Team

"We are thrilled to present the EXs 255 Kelfar Omega Greek Bouzouki to you. Our team has put immense effort into crafting these sounds to provide you with an unparalleled musical experience. We hope you enjoy exploring the full potential of this library and that it inspires your creativity."



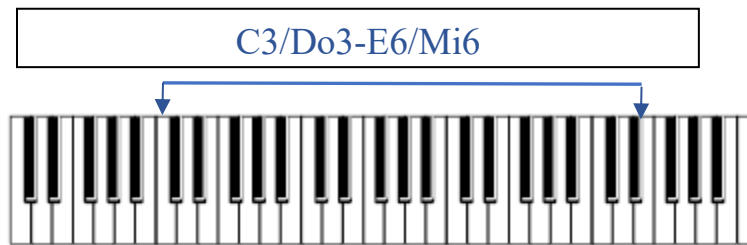
User Guide to the EXs 255 Kelfar Omega Greek Bouzouki

In this guide, you will find that most of the Programs and Combis have been assigned to the **AMS** (*Alternate Modulation Source, Realtime Controls*) and if used properly, will add realism and dynamics to your performance. You have dynamic control over the sound using SW1, SW2, After Touch, Velocity, Joystick, and Ribbon (Kronos LS, Nautilus via Midi In).

It will take time to master this sound library to its fullest expression, but once you do, you'll find an astonishing variety of sounds to create and play right from your electronic keyboard.

"For the best sound experience, we recommend utilizing the key range C3 through E6."

Key Zones in Combinations:



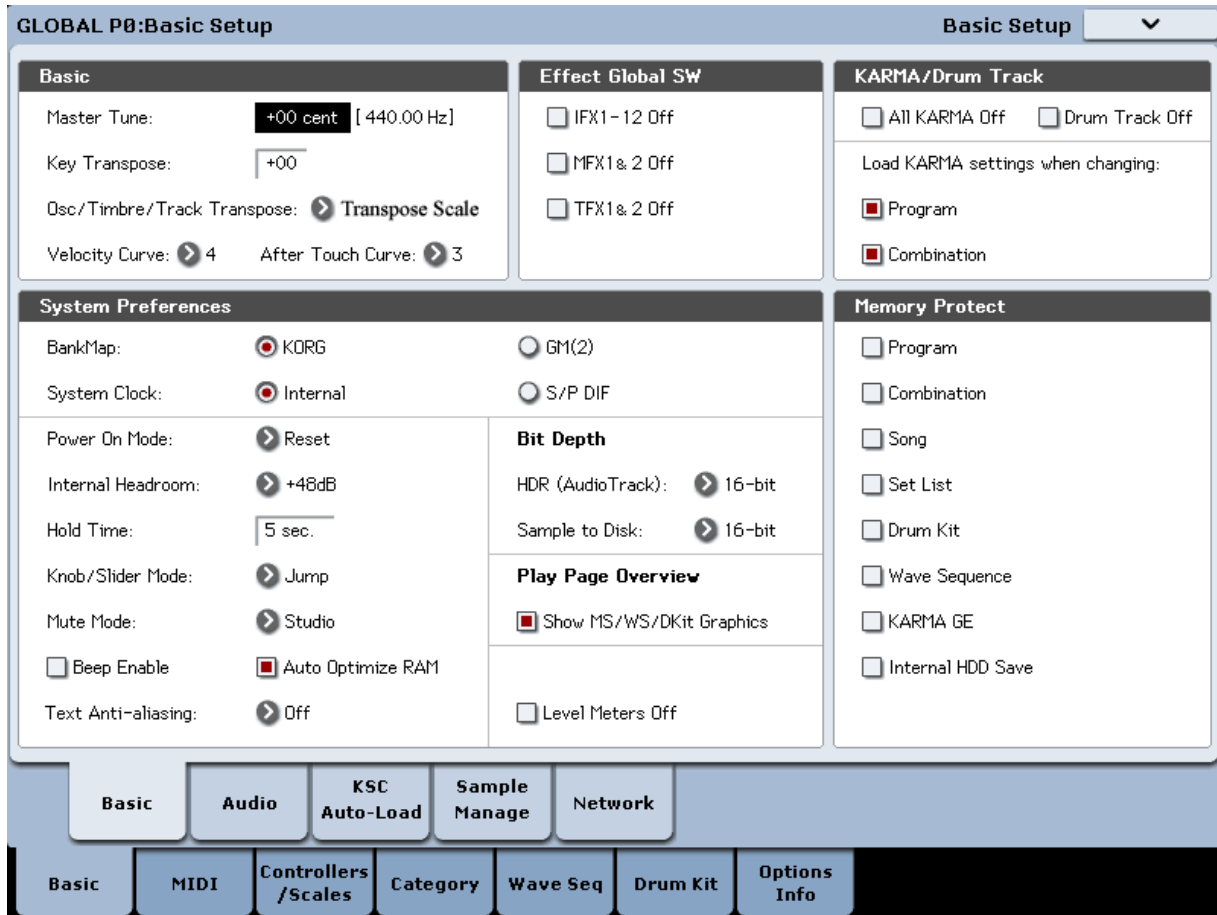
Important Note

Before using the sounds provided with this library, please read the following. At Kelfar Technologies, we have dedicated significant time to designing and programming both the **Programs** and **Combinations** for the **EXs 255 Kelfar Omega Greek Bouzouki**. We designed the Programs as templates for the Combinations due to the complexity of programming and to enable real-time articulation performance.

The **Combinations** feature in **Kronos/Nautilus-(AT)** is a powerful tool that allows you to expand beyond the limitations of using a single Program. For example, with the **EXs 255 Omega Greek Bouzouki**, you can trigger more than nine dynamics, including various articulations, velocity, Knobs, Switches, Joystick, Vector Joystick, and Ribbon. It is important to note that the **32 Combinations** are designed to be performed, not the Programs, to take full advantage of all these features.

Before using the EXs 255 Kelfar Omega Greek Bouzouki, please make sure that the Korg Kronos has the following suggested default Global setup:

1. Press the button **Global**
2. Press the tab **Basic** on the touchscreen to access the **Global P0: Basic Setup**



By default, the Osc/Timbre/Track Transpose is set to "Works Within Scale". For the EXs 255 Kelfar Omega Greek Bouzouki sound library to work properly, it is necessary to set the Osc/Timbre/Track to "Transposes Scale".

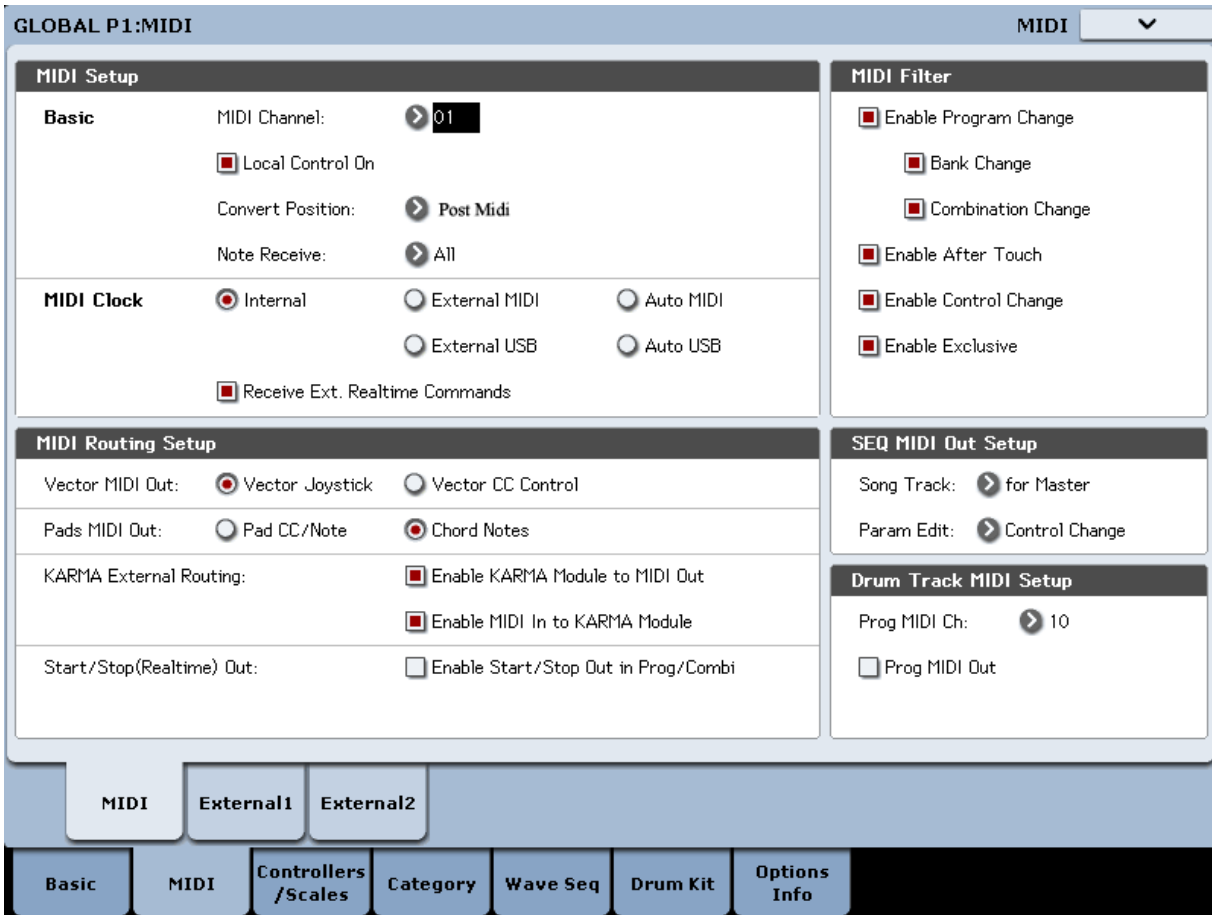
*Optional: In some cases, the level meters may slightly decrease polyphony. If this occurs, enable the **Level Meters Off** option.*

Be sure to **Write Global Setting** when modifying the data as follows:

1. Select **Write Global Setting** from the drop-menu. A dialog box will appear.
2. Press **OK** to write the data or press cancel without writing the data.

You can also use the **SEQUENCER REC/WRITE** switch to write data in the same way as the **Write Global Setting** command.

1. Press the button **Global**
2. Press the tab **Midi** on the touchscreen to access the **GLOBAL P1:MIDI**



By default, the **Convert Position** is set to "Pre Midi". For the EXs 255 Kelfar Omega Greek Bouzouki sound library to work properly, it is necessary to set the **Convert Position** to "Post Midi".

Be sure to **Write Global Setting** when modifying the data as follows:

1. Select **Write Global Setting** from the drop-menu. A dialog box will appear.
2. Press **OK** to write the data or press cancel without writing the data.

You can also use the **SEQUENCER REC/WRITE** switch to write data in the same way as the **Write Global Setting** command.

For your convenience, we have enabled RT KNOBS/KARMA (LED IS ON) to control the sound in real time. However, check page #10 for more assignable knobs, switches, and programs with Karma GE (Arp-Nautilus) control.

From Korg Kronos Operation Guide:

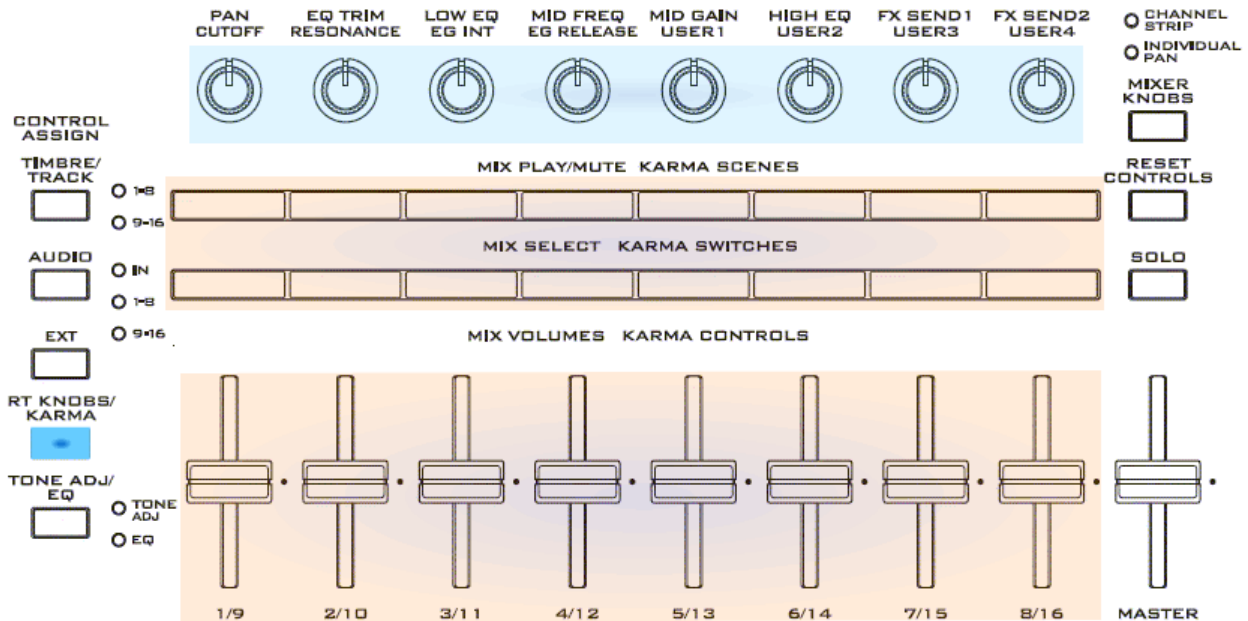
"The **Realtime Knobs** are a traditional feature of Korg workstations, combining modulation, quick edits, and hands-on control.

"In **RT KNOBS/KARMA** mode, **Knobs 1-4** have dedicated functions, as printed on the front panel: **Filter Cutoff, Filter Resonance, Filter EG Intensity, and Release Time**. All of these correspond to standard MIDI CCs."

Common Realtime Controls: **Knobs, Switches, Joystick, Vector Joystick, and Ribbon:**

Knob 1 (CUTOFF)	SW1:	VELOCITY
Knob 2 (RESONANCE)	SW2:	
Knob 3 (EG INT)	JS +Y:	
Knob 4 (EG RELEASE)	JS -Y:	
Knob 5 (USER1):	JS -X:	
Knob 6 (USER2):	JS +X:	
Knob 7/N-5 (USER3):	MFx1	Ribbon:
Knob 8/N-6 (USER4):	MFx2	AFTER TOUCH – Kronos/N-AT

*N = Nautilus, N-T=Nautilus AT



ASSIGNABLE AMS (Alternate Modulation Source)

For most programs and combinations listed in the manual, **AMS** assignments and Real-Time Controls have been standardized. Two reference tables are provided, showing the typical AMS assignments used during performance for both Programs and Combinations. In addition, we have left further **AMS** options—such as the Knobs and Vector Joystick—open for you to explore and customize, encouraging creative experimentation.

Poly Legato

Poly Legato enables smooth transitions by crossfading between the current note and the next while holding the previous note. This technique allows for seamless legato performance, eliminating unwanted artifacts. **Poly Legato** is available in both Programs and Combinations, provided it is enabled in the Program settings.

Expressive Bouzouki Playing Through Four Performance Algorithms

The **Greek Bouzouki Scales Algorithms**—**Alg1** through **Alg4**—provide a comprehensive framework for authentic modal performance and dynamic phrasing across the instrument’s range. **Alg1** mirrors the traditional open string tuning: **C / Do**, **F / Fa**, **A / La**, and **D / Re**, serving as the tonal foundation for standard modal articulation. In contrast, **Alg2**, **Alg3**, and **Alg4** offer expanded versatility, enabling melodic expression across all four strings and facilitating access to scale positions that emphasize higher-register phrasing. These algorithms are especially effective when performing on **String 4 (D / Re)** and **String 3 (A / La)**, allowing intricate *Taksim* improvisations without requiring transitions to lower-pitched strings.

This modular algorithm structure empowers the player to switch seamlessly between modal styles, accommodating both traditional and contemporary interpretations of the Bouzouki’s rich musical heritage.

Among the most commonly performed **Dromoi** (modes) in Greek Bouzouki music are:

🎵 Dromos (Mode)	Tonal Character	Typical Usage
Hitzaz	Exotic, dramatic	Rebetiko, folk ballads
Hitzazkiar	Intense, ornamental	Taksim, expressive solos
Ousak	Warm, melancholic	Traditional songs, introspective pieces
Rast	Pure, uplifting	Dance tunes, modal improvisation
Sabach	Deep, spiritual	Liturgical and folk contexts
Niavent	Bright, lyrical	Melodic improvisation, modern styles
Kartziyar	Mysterious, modal	Ornamented solos, expressive passages
Houzam	Rich, complex	Advanced modal improvisation
Segiah	Subtle, emotional	Slow Taksim, expressive transitions

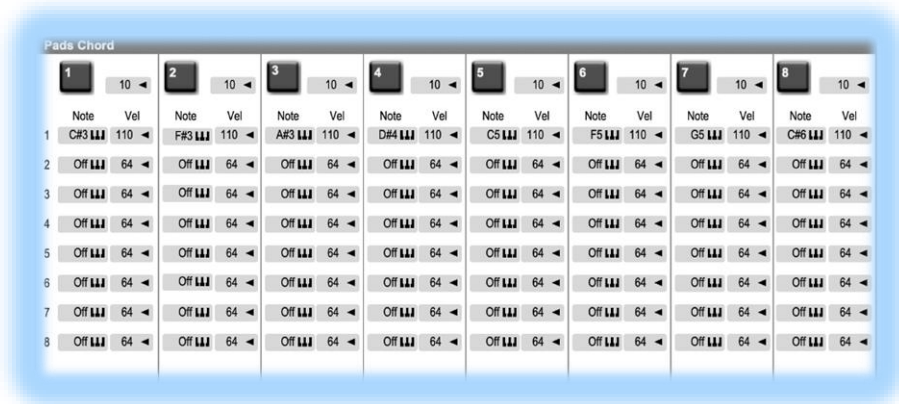
These modes are deeply rooted in Greek musical tradition and often share structural similarities with Middle Eastern Maqamat. Each algorithm in your system can be mapped to support these scales through AMS modulation, velocity layering, and key-off sample articulation—bringing the Bouzouki’s expressive range to life.

ASSIGNABLE AMS (Combinations)

	Bank	Name	JS-Y	JS+Y	SW1	SW2	Ribbon	AT	Velocity
Combi	I-G000	Kelfar GrkBouzouki Alg1	Staccato/Mute	Triplet Trem.	Dn Slide	Up Slide	Yes	Amp Mod.	110/Tremolo
Combi	I-G001	Kelfar GrkBouzouki Alg2	Staccato/Mute	Triplet Trem.	Dn Slide	Up Slide	Yes	Amp Mod.	110/Tremolo
Combi	I-G002	Kelfar GrkBouzouki Alg3	Staccato/Mute	Triplet Trem.	Dn Slide	Up Slide	Yes	Amp Mod.	110/Tremolo
Combi	I-G003	Kelfar GrkBouzouki Alg4	Staccato/Mute	Triplet Trem.	Dn Slide	Up Slide	Yes	Amp Mod.	110/Tremolo
Combi	I-G004	Kelfar GrkBouzoukiP Alg1	Staccato/Mute	Triplet Trem.	Dn Slide	Up Slide	Yes	Amp Mod.	110/Tremolo
Combi	I-G005	Kelfar GrkBouzoukiP Alg2	Staccato/Mute	Triplet Trem.	Dn Slide	Up Slide	Yes	Amp Mod.	110/Tremolo
Combi	I-G006	Kelfar GrkBouzoukiP Alg3	Staccato/Mute	Triplet Trem.	Dn Slide	Up Slide	Yes	Amp Mod.	110/Tremolo
Combi	I-G007	Kelfar GrkBouzoukiP Alg4	Staccato/Mute	Triplet Trem.	Dn Slide	Up Slide	Yes	Amp Mod.	110/Tremolo
Combi	I-G008	Dynamic GrkBouzouki Alg1	Staccato/Mute	Triplet Trem.	Dn Slide	Up Slide	Yes	Amp Mod.	110/Tremolo
Combi	I-G009	Dynamic GrkBouzouki Alg2	Staccato/Mute	Triplet Trem.	Dn Slide	Up Slide	Yes	Amp Mod.	110/Tremolo
Combi	I-G010	Dynamic GrkBouzouki Alg3	Staccato/Mute	Triplet Trem.	Dn Slide	Up Slide	Yes	Amp Mod.	110/Tremolo
Combi	I-G011	Dynamic GrkBouzouki Alg4	Staccato/Mute	Triplet Trem.	Dn Slide	Up Slide	Yes	Amp Mod.	110/Tremolo
Combi	I-G012	Dynamic GrBouzoukiP Alg1	Staccato/Mute	Triplet Trem.	Dn Slide	Up Slide	Yes	Amp Mod.	110/Tremolo
Combi	I-G013	Dynamic GrBouzoukiP Alg2	Staccato/Mute	Triplet Trem.	Dn Slide	Up Slide	Yes	Amp Mod.	110/Tremolo
Combi	I-G014	Dynamic GrBouzoukiP Alg3	Staccato/Mute	Triplet Trem.	Dn Slide	Up Slide	Yes	Amp Mod.	110/Tremolo
Combi	I-G015	Dynamic GrBouzoukiP Alg4	Staccato/Mute	Triplet Trem.	Dn Slide	Up Slide	Yes	Amp Mod.	110/Tremolo
Combi	I-G016	GrkBouzouki Slide 1	Staccato/Mute	Triplet Trem.	Dn Slide	Up Slide	Yes	Amp Mod.	110/Tremolo
Combi	I-G017	GrkBouzouki Slide 2	Staccato/Mute	Triplet Trem.	Dn Slide	Up Slide	Yes	Amp Mod.	110/Tremolo
Combi	I-G018	GrkBouzouki Slide 3	Staccato/Mute	Triplet Trem.	Dn Slide	Up Slide	Yes	Amp Mod.	110/Tremolo
Combi	I-G019	GrkBouzouki Slide 4	Staccato/Mute	Triplet Trem.	Dn Slide	Up Slide	Yes	Amp Mod.	110/Tremolo
Combi	I-G020	GrkBouzoukiP Slide 1	Staccato/Mute	Triplet Trem.	Dn Slide	Up Slide	Yes	Amp Mod.	110/Tremolo
Combi	I-G021	GrkBouzoukiP Slide 2	Staccato/Mute	Triplet Trem.	Dn Slide	Up Slide	Yes	Amp Mod.	110/Tremolo
Combi	I-G022	GrkBouzoukiP Slide 3	Staccato/Mute	Triplet Trem.	Dn Slide	Up Slide	Yes	Amp Mod.	110/Tremolo
Combi	I-G023	GrkBouzoukiP Slide 4	Staccato/Mute	Triplet Trem.	Dn Slide	Up Slide	Yes	Amp Mod.	110/Tremolo
Combi	I-G024	Niko's Taverna Bouzouki1	Staccato/Mute	Triplet Trem.	Dn Slide	Up Slide	Yes	Amp Mod.	110/Tremolo
Combi	I-G025	Niko's Taverna Bouzouki2	Staccato/Mute	Triplet Trem.	Dn Slide	Up Slide	Yes	Amp Mod.	110/Tremolo
Combi	I-G026	Niko's Taverna Bouzouki3	Staccato/Mute	Triplet Trem.	Dn Slide	Up Slide	Yes	Amp Mod.	110/Tremolo
Combi	I-G027	Niko's Taverna Bouzouki4	Staccato/Mute	Triplet Trem.	Dn Slide	Up Slide	Yes	Amp Mod.	110/Tremolo
Combi	I-G028	Vel. Two Bouzouki Alg 1	Staccato/Mute	Triplet Trem.	Dn Slide	Up Slide	Yes	Amp Mod.	110/Tremolo
Combi	I-G029	Vel. Two Bouzouki Alg 2	Staccato/Mute	Triplet Trem.	Dn Slide	Up Slide	Yes	Amp Mod.	110/Tremolo
Combi	I-G030	Kelfar Bouzouki Pad	Filter EG	Vibrato	N/A	N/A	Yes	Amp Mod.	N/A
Combi	I-G031	Kelfar Majesty Bouzouki	Filter EG	Vibrato	N/A	N/A	Yes	Amp Mod.	N/A

Note: For Korg Nautilus and Kronos LS (with Ribbon), which lack Aftertouch and a built-in Ribbon controller, these functions can be accessed via MIDI In when an external keyboard or Ribbon controller is connected.

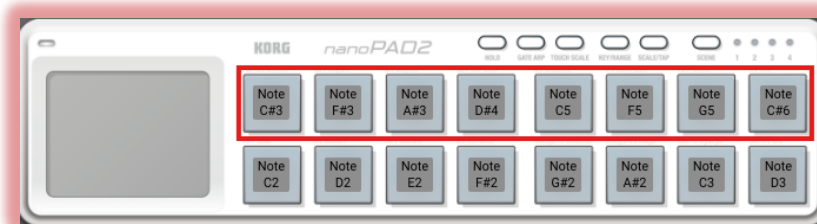
Korg Kronon Pads



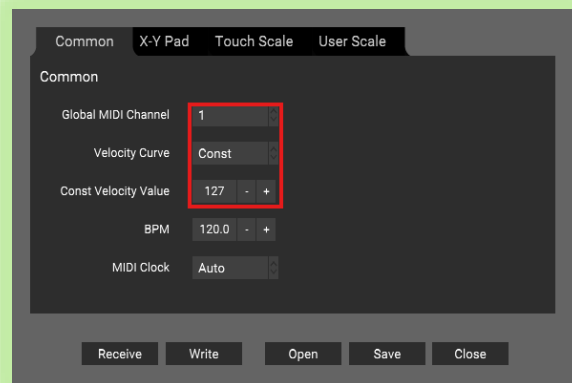
Pads in the Kronos series allow you to trigger chords or single notes. We've programmed eight Glissando Up/Down events on MIDI Channel 10 with a FIXED velocity of 127.

Unfortunately, the Korg Nautilus/AT does not support pad features. However, you can connect a MIDI controller such as the Korg nanoPad2, set its output to MIDI Channel 10, and trigger glissandos with a velocity of 127 or higher. Please refer to the owner's manual for instructions on setting up the MIDI controller or nanoPad2.

- **“Trigger glissando (up) on PADS 1–4, and glissando (down) on PADS 5–6.”**



nanoPad2



Common Global Settings for nanoPad2

Voice Name List

PROGRAMS U-F/Nautilus-f

Program	U-F000	Kelfar Gr.Bouzouki Str1	Program	U-F037	Oct.GlissP UP/Dn Vel 110
Program	U-F001	Kelfar Gr.Bouzouki Str2	Program	U-F038	Kelfar Majesty Bouzouki1
Program	U-F002	Kelfar Gr.Bouzouki Str3	Program	U-F039	Kelfar Majesty Bouzouki2
Program	U-F003	Kelfar Gr.Bouzouki Str4	Program	U-F040	Kelfar Majesty Bouzouki3
Program	U-F004	GkB Str1 Trip/Stac JS-+Y	Program	U-F041	Kelfar Majesty Bouzouki4
Program	U-F005	GkB Str2 Trip/Stac JS-+Y	Program	U-F042	Kelfar Bouzouki Pad Str1
Program	U-F006	GkB Str3 Trip/Stac JS-+Y	Program	U-F043	Kelfar Bouzouki Pad Str2
Program	U-F007	GkB Str4 Trip/Stac JS-+Y	Program	U-F044	Kelfar Bouzouki Pad Str3
Program	U-F008	Kelfar Gr.BouzoukiP Str1	Program	U-F045	Kelfar Bouzouki Pad Str4
Program	U-F009	Kelfar Gr.BouzoukiP Str2	Program	U-F046	Greek Bouzouki KEYOFF 1
Program	U-F010	Kelfar Gr.BouzoukiP Str3	Program	U-F047	Greek BouzoukiP KEYOFF 2
Program	U-F011	Kelfar Gr.BouzoukiP Str4			
Program	U-F012	GBP Str1 Trip/Stac JS-+Y			
Program	U-F013	GBP Str2 Trip/Stac JS-+Y			
Program	U-F014	GBP Str3 Trip/Stac JS-+Y			
Program	U-F015	GBP Str4 Trip/Stac JS-+Y			
Program	U-F016	Dynamic Gr.Bouzouki Str1			
Program	U-F017	Dynamic Gr.Bouzouki Str2			
Program	U-F018	Dynamic Gr.Bouzouki Str3			
Program	U-F019	Dynamic Gr.Bouzouki Str4			
Program	U-F020	Dynamic GrBouzoukiP Str1			
Program	U-F021	Dynamic GrBouzoukiP Str2			
Program	U-F022	Dynamic GrBouzoukiP Str3			
Program	U-F023	Dynamic GrBouzoukiP Str4			
Program	U-F024	Gr.Bouzouki Slide Str 1			
Program	U-F025	Gr.Bouzouki Slide Str 2			
Program	U-F026	Gr.Bouzouki Slide Str 3			
Program	U-F027	Gr.Bouzouki Slide Str 4			
Program	U-F028	Gr.BouzoukiP Slide Str 1			
Program	U-F029	Gr.BouzoukiP Slide Str 2			
Program	U-F030	Gr.BouzoukiP Slide Str 3			
Program	U-F031	Gr.BouzoukiP Slide Str 4			
Program	U-F032	Vel. Bouzouki Str1			
Program	U-F033	Vel. Bouzouki Str2			
Program	U-F034	Vel. Bouzouki Str3			
Program	U-F035	Vel. Bouzouki Str4			
Program	U-F036	Oct. Gliss UP/Dn Vel 110			

COMBINATIONS I-G/Nautilus-G

Combi	I-G000	Kelfar GrkBouzouki Alg1
Combi	I-G001	Kelfar GrkBouzouki Alg2
Combi	I-G002	Kelfar GrkBouzouki Alg3
Combi	I-G003	Kelfar GrkBouzouki Alg4
Combi	I-G004	Kelfar GrkBouzoukiP Alg1
Combi	I-G005	Kelfar GrkBouzoukiP Alg2
Combi	I-G006	Kelfar GrkBouzoukiP Alg3
Combi	I-G007	Kelfar GrkBouzoukiP Alg4
Combi	I-G008	Dynamic GrkBouzouki Alg1
Combi	I-G009	Dynamic GrkBouzouki Alg2
Combi	I-G010	Dynamic GrkBouzouki Alg3
Combi	I-G011	Dynamic GrkBouzouki Alg4
Combi	I-G012	Dynamic GrBouzoukiP Alg1
Combi	I-G013	Dynamic GrBouzoukiP Alg2
Combi	I-G014	Dynamic GrBouzoukiP Alg3
Combi	I-G015	Dynamic GrBouzoukiP Alg4
Combi	I-G016	GrkBouzouki Slide 1
Combi	I-G017	GrkBouzouki Slide 2
Combi	I-G018	GrkBouzouki Slide 3
Combi	I-G019	GrkBouzouki Slide 4
Combi	I-G020	GrkBouzoukiP Slide 1
Combi	I-G021	GrkBouzoukiP Slide 2
Combi	I-G022	GrkBouzoukiP Slide 3
Combi	I-G023	GrkBouzoukiP Slide 4
Combi	I-G024	Niko's Taverna Bouzouki1
Combi	I-G025	Niko's Taverna Bouzouki2
Combi	I-G026	Niko's Taverna Bouzouki3
Combi	I-G027	Niko's Taverna Bouzouki4
Combi	I-G028	Vel. Two Bouzouki Alg 1
Combi	I-G029	Vel. Two Bouzouki Alg 2
Combi	I-G030	Kelfar Bouzouki Pad
Combi	I-G031	Kelfar Majesty Bouzouki

Wave Sequences U-DD/Nautilus-N

WaveSequence	U-DD000	GBRGT_Dist Side R-UP/DN
WaveSequence	U-DD001	GBRGT_Dist Side G-UP/DN
WaveSequence	U-DD002	GBRGT_Dist SideH R-UP/DN
WaveSequence	U-DD003	GBRGT_Dist SideH G-UP/DN
WaveSequence	U-DD004	STRUM NOISE 1&2 2PU R
WaveSequence	U-DD005	STRUM NOISE 1&2 2PU G
WaveSequence	U-DD006	STRUM NOISE 3&4 2PU R
WaveSequence	U-DD007	STRUM NOISE 3&4 2PU G
WaveSequence	U-DD008	Greek Bouzouki Str 1_p
WaveSequence	U-DD009	Greek Bouzouki Str 2_p
WaveSequence	U-DD010	Greek Bouzouki Str 3_p
WaveSequence	U-DD011	Greek Bouzouki Str 4_p
WaveSequence	U-DD012	Greek Bouzouki Str 1_mp
WaveSequence	U-DD013	Greek Bouzouki Str 2_mp
WaveSequence	U-DD014	Greek Bouzouki Str 3_mp
WaveSequence	U-DD015	Greek Bouzouki Str 4_mp
WaveSequence	U-DD016	GB. Str1 Slide/Trm SW1/2
WaveSequence	U-DD017	GB. Str2 Slide/Trm SW1/2
WaveSequence	U-DD018	GB. Str3 Slide/Trm SW1/2
WaveSequence	U-DD019	GB. Str4 Slide/Trm SW1/2
WaveSequence	U-DD020	Greek BouzoukiP Str 1_p
WaveSequence	U-DD021	Greek BouzoukiP Str 2_p
WaveSequence	U-DD022	Greek BouzoukiP Str 3_p
WaveSequence	U-DD023	Greek BouzoukiP Str 4_p
WaveSequence	U-DD024	Greek BouzoukiP Str 1_mp
WaveSequence	U-DD025	Greek BouzoukiP Str 2_mp
WaveSequence	U-DD026	Greek BouzoukiP Str 3_mp
WaveSequence	U-DD027	Greek BouzoukiP Str 4_mp
WaveSequence	U-DD028	GBP.Str1 Slide/Trm SW1/2
WaveSequence	U-DD029	GBP.Str2 Slide/Trm SW1/2
WaveSequence	U-DD030	GBP.Str3 Slide/Trm SW1/2
WaveSequence	U-DD031	GBP.Str4 Slide/Trm SW1/2

MultiSamples (Stereo)

000	Gk Bouzouki Str1 Dn p	037	Gk Bouzouki S4 Tremolo	074	GkBouzoukiP S3 SlideDn
001	Gk Bouzouki Str1 Dn mp	038	Gk Bouzouki S1 Triplet	075	GkBouzoukiP S4 SlideDn
002	Gk Bouzouki Str1 Dn f	039	Gk Bouzouki S2 Triplet	076	GkBouzoukiP S1 SlideUp
003	Gk Bouzouki Str1 Up p	040	Gk Bouzouki S3 Triplet	077	GkBouzoukiP S2 SlideUp
004	Gk Bouzouki Str1 Up mp	041	Gk Bouzouki S4 Triplet	078	GkBouzoukiP S3 SlideUp
005	Gk Bouzouki Str1 Up f	042	Gk Bouzouki S1 Staccat	079	GkBouzoukiP S4 SlideUp
006	Gk Bouzouki Str2 Dn p	043	Gk Bouzouki S2 Staccat	080	GkBouzoukiP S1 Tremoli
007	Gk Bouzouki Str2 Dn mp	044	Gk Bouzouki S3 Staccat	081	GkBouzoukiP S2 Tremoli
008	Gk Bouzouki Str2 Dn f	045	Gk Bouzouki S4 Staccat	082	GkBouzoukiP S3 Tremoli
009	Gk Bouzouki Str2 Up p	046	GkBouzoukiP Str1 Dn p	083	GkBouzoukiP S4 Tremoli
010	Gk Bouzouki Str2 Up mp	047	GkBouzoukiP Str1 Dn mp	084	GkBouzoukiP S1 Triplet
011	Gk Bouzouki Str2 Up f	048	GkBouzoukiP Str1 Dn f	085	GkBouzoukiP S2 Triplet
012	Gk Bouzouki Str3 Dn p	049	GkBouzoukiP Str1 Up p	086	GkBouzoukiP S3 Triplet
013	Gk Bouzouki Str3 Dn mp	050	GkBouzoukiP Str1 Up mp	087	GkBouzoukiP S4 Triplet
014	Gk Bouzouki Str3 Dn f	051	GkBouzoukiP Str1 Up f	088	GkBouzoukiP S1 Staccat
015	Gk Bouzouki Str3 Up p	052	GkBouzoukiP Str2 Dn p	089	GkBouzoukiP S2 Staccat
016	Gk Bouzouki Str3 Up mp	053	GkBouzoukiP Str2 Dn mp	090	GkBouzoukiP S3 Staccat
017	Gk Bouzouki Str3 Up f	054	GkBouzoukiP Str2 Dn f	091	GkBouzoukiP S4 Staccat
018	Gk Bouzouki Str4 Dn p	055	GkBouzoukiP Str2 Up p		
019	Gk Bouzouki Str4 Dn mp	056	GkBouzoukiP Str2 Up mp		
020	Gk Bouzouki Str4 Dn f	057	GkBouzoukiP Str2 Up f		
021	Gk Bouzouki Str4 Up p	058	GkBouzoukiP Str3 Dn p		
022	Gk Bouzouki Str4 Up mp	059	GkBouzoukiP Str3 Dn mp		
023	Gk Bouzouki Str4 Up f	060	GkBouzoukiP Str3 Dn f		
024	Gk Bouzouki OctDn	061	GkBouzoukiP Str3 Up p		
025	Gk Bouzouki OctUp	062	GkBouzoukiP Str3 Up mp		
026	Gk Bouzouki S1 SlideDn	063	GkBouzoukiP Str3 Up f		
027	Gk Bouzouki S2 SlideDn	064	GkBouzoukiP Str4 Dn p		
028	Gk Bouzouki S3 SlideDn	065	GkBouzoukiP Str4 Dn mp		
029	Gk Bouzouki S4 SlideDn	066	GkBouzoukiP Str4 Dn f		
030	Gk Bouzouki S1 SlideUp	067	GkBouzoukiP Str4 Up p		
031	Gk Bouzouki S2 SlideUp	068	GkBouzoukiP Str4 Up mp		
032	Gk Bouzouki S3 SlideUp	069	GkBouzoukiP Str4 Up f		
033	Gk Bouzouki S4 SlideUp	070	GkBouzoukiP OctDn		
034	Gk Bouzouki S1 Tremolo	071	GkBouzoukiP OctUp		
035	Gk Bouzouki S2 Tremolo	072	GkBouzoukiP S1 SlideDn		
036	Gk Bouzouki S3 Tremolo	073	GkBouzoukiP S2 SlideDn		

Multisamples (Mono)

000	Gk Bouzouki Str1 Dn p -L	038	Gk Bouzouki Str4 Dn mp-L
001	Gk Bouzouki Str1 Dn p -R	039	Gk Bouzouki Str4 Dn mp-R
002	Gk Bouzouki Str1 Dn mp-L	040	Gk Bouzouki Str4 Dn f -L
003	Gk Bouzouki Str1 Dn mp-R	041	Gk Bouzouki Str4 Dn f -R
004	Gk Bouzouki Str1 Dn f -L	042	Gk Bouzouki Str4 Up p -L
005	Gk Bouzouki Str1 Dn f -R	043	Gk Bouzouki Str4 Up p -R
006	Gk Bouzouki Str1 Up p -L	044	Gk Bouzouki Str4 Up mp-L
007	Gk Bouzouki Str1 Up p -R	045	Gk Bouzouki Str4 Up mp-R
008	Gk Bouzouki Str1 Up mp-L	046	Gk Bouzouki Str4 Up f -L
009	Gk Bouzouki Str1 Up mp-R	047	Gk Bouzouki Str4 Up f -R
010	Gk Bouzouki Str1 Up f -L	048	Gk Bouzuoki OctDn -L
011	Gk Bouzouki Str1 Up f -R	049	Gk Bouzuoki OctDn -R
012	Gk Bouzouki Str2 Dn p -L	050	Gk Bouzuoki OctUp -L
013	Gk Bouzouki Str2 Dn p -R	051	Gk Bouzuoki OctUp -R
014	Gk Bouzouki Str2 Dn mp-L	052	Gk Bouzouki S1 SlideDn-L
015	Gk Bouzouki Str2 Dn mp-R	053	Gk Bouzouki S1 SlideDn-R
016	Gk Bouzouki Str2 Dn f -L	054	Gk Bouzouki S2 SlideDn-L
017	Gk Bouzouki Str2 Dn f -R	055	Gk Bouzouki S2 SlideDn-R
018	Gk Bouzouki Str2 Up p -L	056	Gk Bouzouki S3 SlideDn-L
019	Gk Bouzouki Str2 Up p -R	057	Gk Bouzouki S3 SlideDn-R
020	Gk Bouzouki Str2 Up mp-L	058	Gk Bouzouki S4 SlideDn-L
021	Gk Bouzouki Str2 Up mp-R	059	Gk Bouzouki S4 SlideDn-R
022	Gk Bouzouki Str2 Up f -L	060	Gk Bouzouki S1 SlideUp-L
023	Gk Bouzouki Str2 Up f -R	061	Gk Bouzouki S1 SlideUp-R
024	Gk Bouzouki Str3 Dn p -L	062	Gk Bouzouki S2 SlideUp-L
025	Gk Bouzouki Str3 Dn p -R	063	Gk Bouzouki S2 SlideUp-R
026	Gk Bouzouki Str3 Dn mp-L	064	Gk Bouzouki S3 SlideUp-L
027	Gk Bouzouki Str3 Dn mp-R	065	Gk Bouzouki S3 SlideUp-R
028	Gk Bouzouki Str3 Dn f -L	066	Gk Bouzouki S4 SlideUp-L
029	Gk Bouzouki Str3 Dn f -R	067	Gk Bouzouki S4 SlideUp-R
030	Gk Bouzouki Str3 Up p -L	068	Gk Bouzouki S1 Tremolo-L
031	Gk Bouzouki Str3 Up p -R	069	Gk Bouzouki S1 Tremolo-R
032	Gk Bouzouki Str3 Up mp-L	070	Gk Bouzouki S2 Tremolo-L
033	Gk Bouzouki Str3 Up mp-R	071	Gk Bouzouki S2 Tremolo-R
034	Gk Bouzouki Str3 Up f -L	072	Gk Bouzouki S3 Tremolo-L
035	Gk Bouzouki Str3 Up f -R	073	Gk Bouzouki S3 Tremolo-R
036	Gk Bouzouki Str4 Dn p -L	074	Gk Bouzouki S4 Tremolo-L
037	Gk Bouzouki Str4 Dn p -R	075	Gk Bouzouki S4 Tremolo-R

076	Gk Bouzouki S1 Triplet-L	114	GkBouzoukiP Str2 Up f -L
077	Gk Bouzouki S1 Triplet-R	115	GkBouzoukiP Str2 Up f -R
078	Gk Bouzouki S2 Triplet-L	116	GkBouzoukiP Str3 Dn p -L
079	Gk Bouzouki S2 Triplet-R	117	GkBouzoukiP Str3 Dn p -R
080	Gk Bouzouki S3 Triplet-L	118	GkBouzoukiP Str3 Dn mp-L
081	Gk Bouzouki S3 Triplet-R	119	GkBouzoukiP Str3 Dn mp-R
082	Gk Bouzouki S4 Triplet-L	120	GkBouzoukiP Str3 Dn f -L
083	Gk Bouzouki S4 Triplet-R	121	GkBouzoukiP Str3 Dn f -R
084	Gk Bouzouki S1 Staccat-L	122	GkBouzoukiP Str3 Up p -L
085	Gk Bouzouki S1 Staccat-R	123	GkBouzoukiP Str3 Up p -R
086	Gk Bouzouki S2 Staccat-L	124	GkBouzoukiP Str3 Up mp-L
087	Gk Bouzouki S2 Staccat-R	125	GkBouzoukiP Str3 Up mp-R
088	Gk Bouzouki S3 Staccat-L	126	GkBouzoukiP Str3 Up f -L
089	Gk Bouzouki S3 Staccat-R	127	GkBouzoukiP Str3 Up f -R
090	Gk Bouzouki S4 Staccat-L	128	GkBouzoukiP Str4 Dn p -L
091	Gk Bouzouki S4 Staccat-R	129	GkBouzoukiP Str4 Dn p -R
092	GkBouzoukiP Str1 Dn p -L	130	GkBouzoukiP Str4 Dn mp-L
093	GkBouzoukiP Str1 Dn p -R	131	GkBouzoukiP Str4 Dn mp-R
094	GkBouzoukiP Str1 Dn mp-L	132	GkBouzoukiP Str4 Dn f -L
095	GkBouzoukiP Str1 Dn mp-R	133	GkBouzoukiP Str4 Dn f -R
096	GkBouzoukiP Str1 Dn f -L	134	GkBouzoukiP Str4 Up p -L
097	GkBouzoukiP Str1 Dn f -R	135	GkBouzoukiP Str4 Up p -R
098	GkBouzoukiP Str1 Up p -L	136	GkBouzoukiP Str4 Up mp-L
099	GkBouzoukiP Str1 Up p -R	137	GkBouzoukiP Str4 Up mp-R
100	GkBouzoukiP Str1 Up mp-L	138	GkBouzoukiP Str4 Up f -L
101	GkBouzoukiP Str1 Up mp-R	139	GkBouzoukiP Str4 Up f -R
102	GkBouzoukiP Str1 Up f -L	140	GkBouzoukiP OctDn -L
103	GkBouzoukiP Str1 Up f -R	141	GkBouzoukiP OctDn -R
104	GkBouzoukiP Str2 Dn p -L	142	GkBouzoukiP OctUp -L
105	GkBouzoukiP Str2 Dn p -R	143	GkBouzoukiP OctUp -R
106	GkBouzoukiP Str2 Dn mp-L	144	GkBouzoukiP S1 SlideDn-L
107	GkBouzoukiP Str2 Dn mp-R	145	GkBouzoukiP S1 SlideDn-R
108	GkBouzoukiP Str2 Dn f -L	146	GkBouzoukiP S2 SlideDn-L
109	GkBouzoukiP Str2 Dn f -R	147	GkBouzoukiP S2 SlideDn-R
110	GkBouzoukiP Str2 Up p -L	148	GkBouzoukiP S3 SlideDn-L
111	GkBouzoukiP Str2 Up p -R	149	GkBouzoukiP S3 SlideDn-R
112	GkBouzoukiP Str2 Up mp-L	150	GkBouzoukiP S4 SlideDn-L
113	GkBouzoukiP Str2 Up mp-R	151	GkBouzoukiP S4 SlideDn-R

152	GkBouzoukiP S1 SlideUp-L
153	GkBouzoukiP S1 SlideUp-R
154	GkBouzoukiP S2 SlideUp-L
155	GkBouzoukiP S2 SlideUp-R
156	GkBouzoukiP S3 SlideUp-L
157	GkBouzoukiP S3 SlideUp-R
158	GkBouzoukiP S4 SlideUp-L
159	GkBouzoukiP S4 SlideUp-R
160	GkBouzoukiP S1 Tremolo-L
161	GkBouzoukiP S1 Tremolo-R
162	GkBouzoukiP S2 Tremolo-L
163	GkBouzoukiP S2 Tremolo-R
164	GkBouzoukiP S3 Tremolo-L
165	GkBouzoukiP S3 Tremolo-R
166	GkBouzoukiP S4 Tremolo-L
167	GkBouzoukiP S4 Tremolo-R
168	GkBouzoukiP S1 Triplet-L
169	GkBouzoukiP S1 Triplet-R
170	GkBouzoukiP S2 Triplet-L
171	GkBouzoukiP S2 Triplet-R
172	GkBouzoukiP S3 Triplet-L
173	GkBouzoukiP S3 Triplet-R
174	GkBouzoukiP S4 Triplet-L
175	GkBouzoukiP S4 Triplet-R
176	GkBouzoukiP S1 Staccat-L
177	GkBouzoukiP S1 Staccat-R
178	GkBouzoukiP S2 Staccat-L
179	GkBouzoukiP S2 Staccat-R
180	GkBouzoukiP S3 Staccat-L
181	GkBouzoukiP S3 Staccat-R
182	GkBouzoukiP S4 Staccat-L
183	GkBouzoukiP S4 Staccat-R